



## Maidstone & District Riding Club - Newsletter November 2009

### EXPRESS DELIVERY!

Having the newsletter delivered by email means that you receive it more quickly and save the Club printing and postage costs. Please send Meryl Honey your email address if you would like to be added to the distribution list.

[meryl.honey@mypostoffice.co.uk](mailto:meryl.honey@mypostoffice.co.uk)

### Photos

If you have a photos of you and your horse that you would like to see on the pages of the new Maidstone & District Riding Club website please e-mail them to [maidstonedistrictrc@hotmail.co.uk](mailto:maidstonedistrictrc@hotmail.co.uk) Thank you.

### **NEWS/RESULTS**

#### Lincoln 2009

Five MDRC members set off for Lincoln Showground on Friday 11<sup>th</sup> September. The traffic was horrendous but we all eventually got there, horses were installed in their luxury accommodation - well it had to be luxury as there was green grass on the floors, something Kent horses hadn't seen for a few weeks!

The Riding Test team, Sarah Leggat, Lucy Field, Teresa Fletcher-Smith and Wendy Thomas all rode well. Sarah Leggat and Barnacle Bee scored a magnificent 72% and were unlucky not to be placed in their arena. Lucy rode an elementary test as an individual and Wendy and Mel Jones also rode prelim tests as individuals. Wendy and Mel were both placed in the top ten in their arenas so were extremely pleased!

The standard at the BRC Championships is extremely high and all five of us were delighted to qualify and represent Maidstone there. The weather was fabulous and our group of riders and helpers all had a really good time. It is a great experience to go to the Championships. There are Riding Club members from all parts of the UK which brings a great atmosphere to the event. We would all go again if we are lucky enough to qualify in the future.



Sarah Leggat and Barnacle Bee at Lincoln

Sarah Leggat and

### Maidstone & District Riding Club Annual General Meeting - 12<sup>th</sup> November 2009

At the AGM the results from the RC dressage series were announced and rosettes and prizes presented by the Club's President, Peggy Skinner.

1 <sup>st</sup>	Lisa Allbutt -	Blue
2 <sup>nd</sup>	Roo King -	Bernard
3 <sup>rd</sup>	Kay Lockyer -	Mattie
4 <sup>th</sup>	Hilary Moon -	As Time Goes By
5 <sup>th</sup>	Wendy Thomas -	Nick
6 <sup>th</sup>	Bill Fox -	Monty
7 <sup>th</sup>	Martin Cotton -	Mr. Darcy
8 <sup>th</sup>	Sue Stewart -	Connie



Lisa Allbutt - Winner of the Points Championship Dressage Series

We are adding an extra show to our dressage series in 2010. The first competition will be held at Stilebridge Barn on Saturday 20<sup>th</sup> February. Schedules will be available soon, please contact Karen Newman (01622) 859971 for more details.

Peggy also presented the Kent County Showjumping Shield to Melanie Jones and Victoria Wood who were part of the triumphant team (along with Heather Edwards and Lynette Morrisy) that won the competition again this year.



Melanie Jones and Victoria Wood



Kay Lockyer receiving her rug at Birchalls

The most improved combination award was won by Kay Lockyer and her lovely horse Mattie. They received a smart show rug, kindly sponsored by Birchalls Riding Shop.

Area 10 Novice Indoor Showjumping Qualifier Saturday 28<sup>th</sup> November 2009 - Duckhurst Farm  
M&DRC organised this event again and, thanks to the superb volunteers (Kate Connell, Sue Quarendon and Louise King - car park stewards, Becky Bosman - scoring, Jenny Hutchinson, Brenda Hawkes, Karen Newman, Mel Honey and Roo King - stewarding and general organisation) who gave up their Saturday the competition ran very smoothly and finished early. Good work Maidstone!

Well done to the horses and riders that represented our Club. The Junior team of Jess Hawkes, Jack Sharpe, Harriet Cannon and Laria Collister were placed 6<sup>th</sup>.

The Senior Team of Ann Moon, Wendy Neath, Jo Cottee and Sarah Leggat (The Golden Girls) came 6<sup>th</sup> and our other Senior Team Michelle Yeo, Lucy Field, Lisa Allbutt and Jo Mooney (The Young Bucks) made the jump off and were placed 3<sup>rd</sup>. Special thanks to Lucy for standing in at extremely short notice!

*Marion Bush*

Royal Windsor Horse Show  
SJ & Riding Test Championships 2010 and 2011

This was a new BRC venture for 2009 - genuine grass roots RC members have the chance to qualify through local & area competitions to compete at Royal Windsor in May - a chance to ride in one of the most prestigious arenas in the country. And winners at this year's Royal Windsor Show will also win a trip to the World Games at Lexington!

Any RC can run a first round qualifier - we have not yet done so but may well run these in 2010 in conjunction with one of our other shows as a qualifier for 2011.

The first round SJ is Top Score at Novice & Intermediate with Junior & Senior sections. Riding Test 6 both Junior & Senior is used for all rounds.

Winners from each qualifier take part at the Area Round 2 competition. A number of events have already taken place, and in our Area 10 Battle [5/12/09] are running Riding Tests with Round 2 at Ardingly on 16/01/10. Honnington [3/01/10] are running Top Score Round 1 with Round 2 at Dartford [Eaglesfield] on 29/3/10.

If you are interested please take a look at Area 10 website [www.brcarea10.org.uk](http://www.brcarea10.org.uk), or follow the link [www.bhs.org.uk](http://www.bhs.org.uk) click on Riding then British Riding Clubs, BRC competitions, Other BRC competitions and Royal Windsor. It's not easy to understand but hopefully once it is more established it will be clearer! I may also be able to help you if you have any questions!

Wendy Neath Area 10 representative.

**RIDE FOR LIFE**

On a misty September morning Kent residents could have been forgiven for wondering whether they had overindulged the night before as horses sprayed pink and riders wearing tutus and feather boas galloped by.

Nearly 100 people took part in the pink themed 10 mile sponsored ride raising £5,600 for Cancer Research UK.

The Club is very grateful to the sponsors, volunteers and landowners who made the event possible and delighted that so much money was raised for such a worthwhile cause.

All riders completing the ride received a rosette provided by the Newnham Court Veterinary Group and NFU Mutual and 14 riders received a bottle of pink fizz provided by Frankham Consultancy Group and AXA PPP Healthcare to thank them for raising over £100 sponsor money. There were also prizes of feed vouchers provided by Gillet Cook and Lillicos for the 'pinkest horse and rider combinations'.

Thank you to everyone that helped to make the day possible!

**CONTACTS**

If you have any queries about bridle paths please contact Anne Rillie (the Club's Bridle Paths Officer) on (01622) 710582.

After many years of dedicated service to the Club Jane Scott has handed over the responsibilities of Membership Secretary to Kay Lockyer. Kay can be contacted on 01622 - 726154.

## **FORTHCOMING EVENTS/TRAINING**

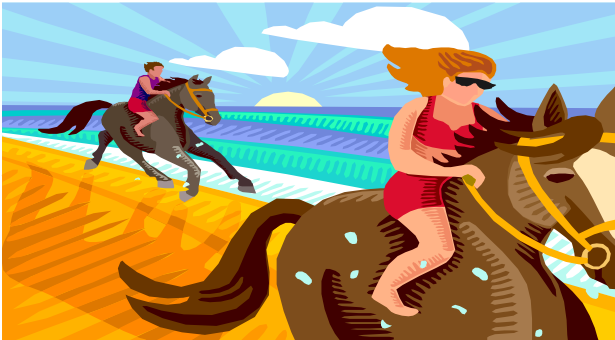
### Fun Christmas Quadrille from Scratch at Street Farm, Burham on Sunday Dec 6<sup>th</sup> 11am

Unfortunately we twice had to cancel the Witches & Demons Quadrille in November, so here's hoping its 3<sup>rd</sup> time lucky...I am planning a Christmas Quadrille on the above date to kick off your celebrations! You don't need to have a dressage horse but you do need to be able to stay in control, separate from others and move on and slow down in walk and trot. If we have enough with brakes we will do some canter too, possibly in 2's or 4's. It helps if you know right from left.

Feel free to dress up in anything seasonal - I have some spare elf tunics & hats in my dressing up box if you don't have anything suitable. The very minimum is tinsel!

Entry fee is £10 to include hot nibbles and hot toddy. (I am also running a similar event for my liveries on Sunday 20<sup>th</sup> December - if you can't make 6<sup>th</sup> there may be a space on 20<sup>th</sup>)

Telephone 07802 676896  
[wendy.neath@btinternet.com](mailto:wendy.neath@btinternet.com)



### Beach Ride, Camber Sands 12<sup>th</sup> December 2009

Let your hair down and join the Club for a gallop along the beach (or a stroll and a paddle if you prefer)!

And, if you can't make the December date but would love to join other members at the beach put the Spring Beach Ride in your diary now. We will be meeting at Camber Sands again on the 7<sup>th</sup> March 2010 (10.00 for 10.30 start)

To book please text or call Jo Cottee  
07710 709 851.

### New Year Ride Saturday January 2<sup>nd</sup> 2010, Street Farm, Burham

We are planning a ride from Street Farm (10.00 am start) to include some of the Tottington Horseways toll route, and weather permitting also the circular ride around Cobtree golf course. Lunch will be in my kitchen and will consist of baked potatoes and soup. Room for a few non riders too to join for lunch but numbers are limited, first come first served... So book soon with Wendy Neath, Street Farm, Burham, Rochester ME1 3RL  
Cost on the day £4 for riders [to include a donation to Tottington Horseways Toll Ride] £2.50 for non - riders for lunch.

We are also planning a ride late Feb/early March at Jeskyns in the Shorne/Cobham area. More details in

next newsletter or register your interest with Wendy Neath.

Telephone 07802 676896  
[wendy.neath@btinternet.com](mailto:wendy.neath@btinternet.com)

### Area 10 Quiz

This is being held on the 29<sup>th</sup> January - venue to be confirmed. Do you know a few horsey facts - would you like to be on the M&D team!

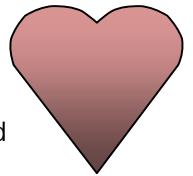
Please contact Wendy Thomas for further details and to register interest!

[wendy.thomas@enterpriseinns.plc.uk](mailto:wendy.thomas@enterpriseinns.plc.uk)  
Telephone 07968 354783

### M&D Fun Quiz Night

We propose to hold the popular evening on Saturday 13<sup>th</sup> February - all details to be confirmed. Please reserve the date in your new 2010 diary and start getting your team together. This is a fun quiz (will you guess the theme of this year's event!!)

This is open to all friends, family and 'significant others' and will be a lot cheaper than a meal in a posh restaurant with a dollop of heart shaped pink icing on the side of your plate!



It's always good fun. And after last year's disappointment at there not being a wooden spoon prize - we will endeavour to find something fitting for this category!

Tables of 8 make a team (but if you are less that's OK).

More details to follow - any queries etc please contact Wendy Thomas

[wendy.thomas@enterpriseinns.plc.uk](mailto:wendy.thomas@enterpriseinns.plc.uk)  
Telephone 07968 354783

### Weekend Camp

Are you interested in coming to an adult training weekend next year 2010?

Arrive Friday night - leave Sunday

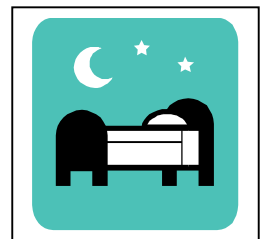
Overnight accommodation for horse and rider

Venue to be confirmed

Lessons in SJ, dressage and XC and LOTS of fun!

Please contact Kate Connell

[kate@ibround2it.plus.com](mailto:kate@ibround2it.plus.com)



Area 10 Winter Dressage - 16<sup>th</sup> January 2010, SE England Showground, Ardingly

If you are interested in being part of a prelim or novice team please let Karen Newman (01622) 859971 know as soon as possible - you need to actually ring her because although she is incredibly talented, she is not telepathic and will not be able to guess that you are keen!!

Winter XC Team Training

Are you interested in being in the riding club teams for either Horse Trials or Festival of the Hunter?

The area Horse Trials qualifier is being held on 27<sup>th</sup> June at Borde Hill, West Sussex. Novice 0.85m, Intermediate 1.00m and Open 1.10m.

The Festival of the Hunter is the old Hunter Trials (but I think they are now having a round of show jumping and a cross country round). The Novice qualifier is being held at Redlands, Sevenoaks on 17<sup>th</sup> April. The Open is yet to be decided.

We are arranging a couple of dates of XC training with BE approved trainer Lucy Thompson.

The proposed dates are weekend of 20/21<sup>st</sup> Feb - provisionally at Lmeq at Reigate ([www.lmeq.com](http://www.lmeq.com)), and 20/21<sup>st</sup> March - provisionally at Chilham (who are building a BE Novice course this winter!)

We are organising this early in the season so that as many people who want to attend can, before you are all busy competing. If we have lots of interest and members want more training then we will have time to organise further dates.

If you are interested - please register your interest with Wendy Thomas (preferably by email!)  
[wendy.thomas@enterpriseinns.plc.uk](mailto:wendy.thomas@enterpriseinns.plc.uk)  
Telephone 07968 354783

We need to get a minimum number to make the training worthwhile and will open it up to non-MDRC members if there is insufficient interest.

I hope you all see this as a positive move for the club - at this stage we just need to know that you want to do it to get an idea of numbers - we will firm up details in the New Year.

If you haven't competed in the teams before and just want some more info - let me know (email/call).

Club Shows

Put the dates in your 2010 diary now!  
Dressage Championship Series - Saturday 20<sup>th</sup> Feb  
Stilebridge Barn, Staplehurst

Dressage Test Training Day - Saturday 20<sup>th</sup> March  
Street Farm, Burham

Fun SJ show - Friday 2<sup>nd</sup> April, Street Farm, Burham

More information and schedules will be available in the New Year!

Neil Boorman Clinics

The Neil Boorman SJ Clinics are held at Duckhurst Farm, Staplehurst on Friday afternoons/evenings. Sessions at 4.00 pm, 5.30 pm and 7.00 pm. £18.00 per session. Clinics will be held on:  
15<sup>th</sup> January, 19<sup>th</sup> February, 19<sup>th</sup> March and 16<sup>th</sup> April 2010.  
For more information please contact Julie Offen 01233 770330.

Leanne Wall Clinics

Flatwork clinics are held every other Wednesday (late mornings) at Vane Farm, Smarden TN27 8PN. Contact Julie Offen 01233 770330 for more details or Leanne Wall 07711 287121 to book your place. Each session costs £14 for ½ hour and £21 for ¾ hour (individual lessons) or £14 each for a shared one hour session.

Polework/Jumping Rallies with Wendy Neath at Street Farm, Burham, Rochester ME1 3RL

Suitable for all levels, nervous / novice upwards. Usual format is 3 or more groups of up to 4 riders 1 hour each. Occasionally smaller/larger groups will have a shorter/longer session, and start/finish times will be adjusted. Sessions are not always held in order of height. The emphasis is on poles, grids and exercises to encourage athleticism and confidence, and both competitors and non competitive riders are welcome

**Please note that Saturday sessions will run generally morning to early afternoon due to parking constraints. There may occasionally be early slots for 1 or 2 people sharing with my livery clients**

Tuesday rallies are held most weeks at 12 noon. They have become known as 'The over 50's' but are for anyone young at heart who enjoys jumping and has a sense of humour!  
Please contact Wendy if you want to know more.

**December**

Saturday 5<sup>th</sup> December 2009  
Saturday 19<sup>th</sup> December Fun Christmas Jumping

**January**

Saturday 9<sup>th</sup> January 2010  
Saturday 30<sup>th</sup> January 2010

**How to book your place on rallies/clinics.**

If you are a first time participant, send a response form & cheque payable to Wendy Neath with the requested information plus an email address. Include any further relevant information such as any time preferences. Once you have attended a rally you can book by email and pay on the day.

For a weekend rally/clinic I will do times on Monday or Tuesday to email out but it would be very helpful if you would book in sooner rather than later.

Payment of £13 to Wendy Neath is now on the day (cash preferred but cheque if this is not possible). If you cancel after I have done times then you may be expected to pay if your place is not filled.

I will be adding more rallies - if you are not already receiving email updates (for rallies and quadrille practices) and would like them, please email me to be included.

Please contact Wendy Neath, Street Farm, Burham, Rochester ME1 3RL. Tel. 07802 676896 Email [wendy.neath@btinternet.com](mailto:wendy.neath@btinternet.com)

Parking at Street Farm is a poo free zone! Please pick up droppings - you can put them on our muck heap.

**ADVERTS**

Advertising is free for Club members and £5.00 for non-members. Please send any adverts that you would like included in the newsletter to:

Meryl Honey  
Moon Corner  
22 Duke of York Way  
Coxheath  
Maidstone  
Kent ME17 4GT  
Tel: 01622 747586  
Email [meryl.honey@mypostoffice.co.uk](mailto:meryl.honey@mypostoffice.co.uk)

**FOR LOAN**  
16.2hh 12 year old middleweight hunter  
Successfully competed showing, SJ, dressage and ODE  
Barney is looking for a competent rider to have fun with at RC/local level.  
Very consistent and reliable at competitions, also safe to hack alone or in company.  
Good in every way i.e. box, clip, shoe, etc.  
To be kept at current yard in Smarden and a contribution to upkeep expected.  
Genuine, kind people need only apply  
NO NOVICES  
Call Julie on 07734 419234

**Safie**  
  
16 year old 16hh warmblood X TB,  
Quiet, loving, sound Mare, looking for somebody to take her on loan love her and work her, she is sound, good to box, shoe, catch, and has no vices.  
Please contact Bill Fox 07957142093 or 01580891436 for more information.

**Milly**

I am looking for someone to share my lovely 15.1hh Dun Mare. She is not a novice ride but huge fun. She has had a year off but prior to that has taken part in lots of RC activities. Ideally, I would like someone to ride her during the week when I am working but it may be possible to share weekends too.  
If you would like to know more please telephone Diana on 07778 313200



**FOR SALE**  
2 wheeler Bellcrown Superbantam mark 4 carriage with extending axles, adjustable balance and back step. Fully dismantles for storage. Excellent condition, garage stored, blue, used on 11hh pony. Suitable for exercise classes and club events.  
  
Harness also available. Very light so useful for small pony/shetland. Probably will take up to 12.2hh.  
  
Ring Caroline for details 01795 842563 or email [caroline@thebartonsweb.plus.com](mailto:caroline@thebartonsweb.plus.com)

**MOBILE HOME IN VGC**  
2 bed in secluded area in exchange for part time work. Terms negotiable  
Please telephone 01795 890462

Mown & Grown - Stable & Groundcare  
Maintenance

Seeding, Spraying, Fertilising, Harrowing,  
Rolling and Mowing

For a perfect pasture don't moan & groan the  
seeds can be sown

3m Quantock springtine harrow with overtop  
grass seeder and heavy roll

Quad bike with spreader, seeder, harrow,  
sprayer and roller

4 x 4 JCB work undertaken

4 x 4 tractor with 40ft cherry picker  
telephone poles for sale

Andy Chantler

01622 842298 or 07977818544

**BIRCHALLS**  
THE RIDING SHOP

#### Riding Club Members Loyalty Card

Loyalty Card available to all Riding Club Members. Why not call in  
and sign up now and receive 5% off purchases over £20.

Birchalls are stockists of: Horse Feed, Bedding, Wormers, Masta  
Horseware, Fal, Harry Hall, Jeffries, Caldene, Kyrak, Joules and  
more ....

We offer a rug clean & repair service.

Open 7 days a week. Mon - Sat 9.00am to 5.30pm

Sundays 10am to 4pm. Open Bank Holidays too.

Pleasant View Garden Centre, Plough Wents Road, Chart Sutton,  
Maidstone, Kent. ME17 3SA. Tel: 01622 844104

#### **BONFLEUR XC COURSE**

Set in 100 acres of Kentish Weald on a working farm

Approximately 50 fences from 2' to 3'6"

Fences purpose built for schooling allowing diverse challenges for horse  
and rider with easy viewing of several fences from one position

COST PER HORSE £15

The course is open for schooling from Wednesday to Sunday every  
week. Please telephone 07976 138120 to book before coming. Group  
bookings can be made for any day of the week.

CLOCK HOUSE COTTAGE,

COXHEATH,

MAIDSTONE,

KENT,

ME174PB

[info@bonfleurcrosscountrycourse.co.uk](mailto:info@bonfleurcrosscountrycourse.co.uk)

## LILLICO'S Country Store

Economy Shavings

&

Other Bedding

A Wide Range of  
Pet Food  
Dry, Tins & Treats

Electric Fencing

Wire & Tools & Troughs

Grass Seeds

Agriculture & Amenity

+ Fertilizer & Weedkillers

Bird Food & Tonics

Pigeon/Wild Bird/Cage Bird  
& Accessories

Horse Feeds

&

Feed Supplements

Country Clothing

Stable Rugs,  
Blankets & Sheets

Home Farm Feeds

Minerals & Blocks

Wormers &

Flea Treatments

Equine/Domestic/Agric.

Small Pet Food

Rabbit/Guinea Pig/Rat/Gerbil/Ferret  
& Fish Pond Food

FREE DELIVERY LOCAL AREA - MIN 25 BAGS / BALES

#### OPENING TIMES

OPEN TO THE GENERAL PUBLIC & TRADE

MON - FRI 8am - 5pm SAT 8.00am - 4pm

Thurs - Late night opening till 7pm

Lillico Attlee, Deddow Way, Aylesford, Kent

01622 718062

#### STILEBRIDGE BARN

"Exceptional care for your horse"

From 1 October 2009 we will be  
offering full livery packages

Possible Assisted livery by agreement

Contact Vanessa 07803 727917

or Naomi 07969 021371

Facilities include 20 x 60 and 20 x 40  
arenas

Solarium

Hot Shower

Large airy boxes

All year turnout